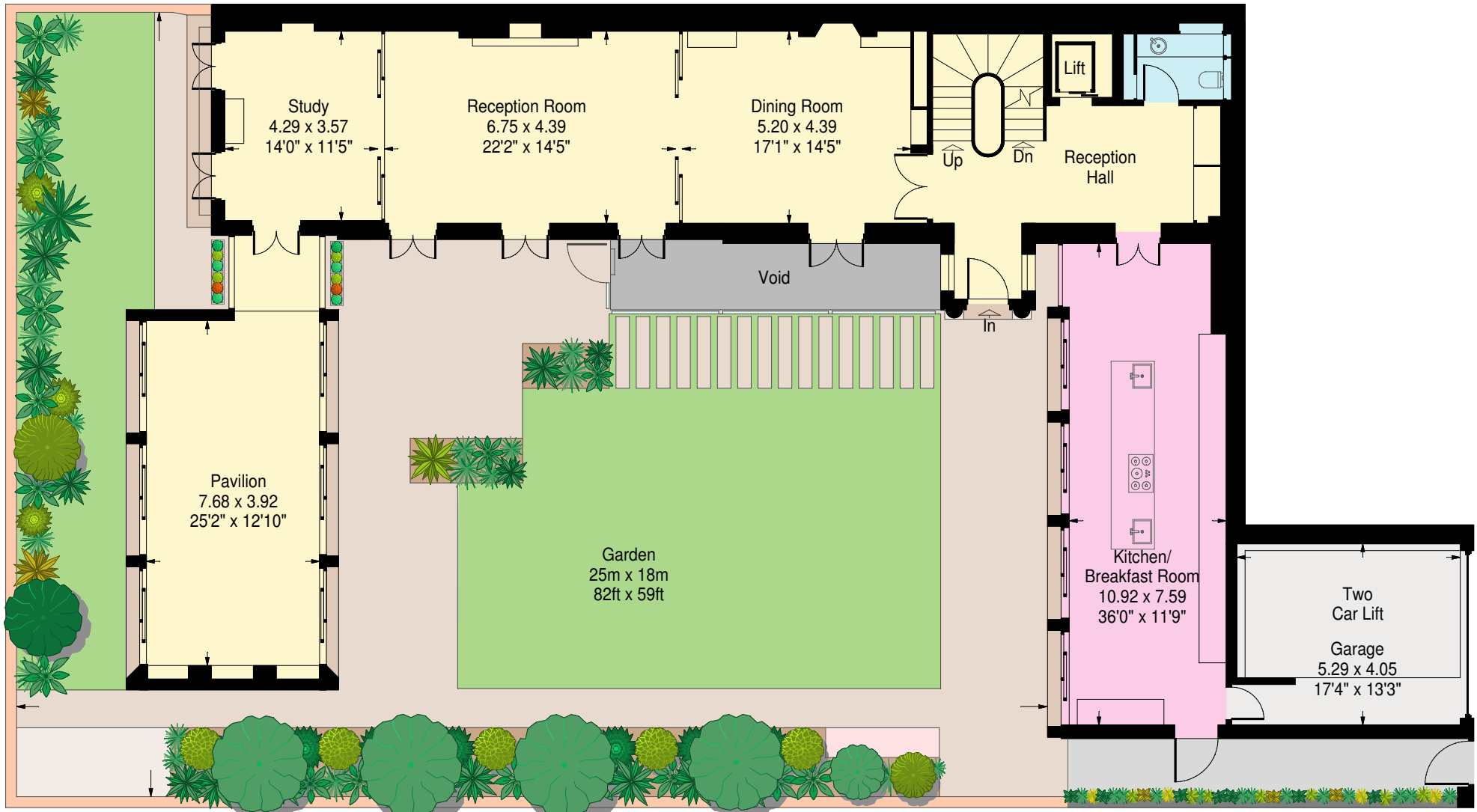


# Melina Place, London NW8

Approximate Gross Internal Area:  
686.3 sq.m. / 7387 sq.ft.  
(including basement and loft room)

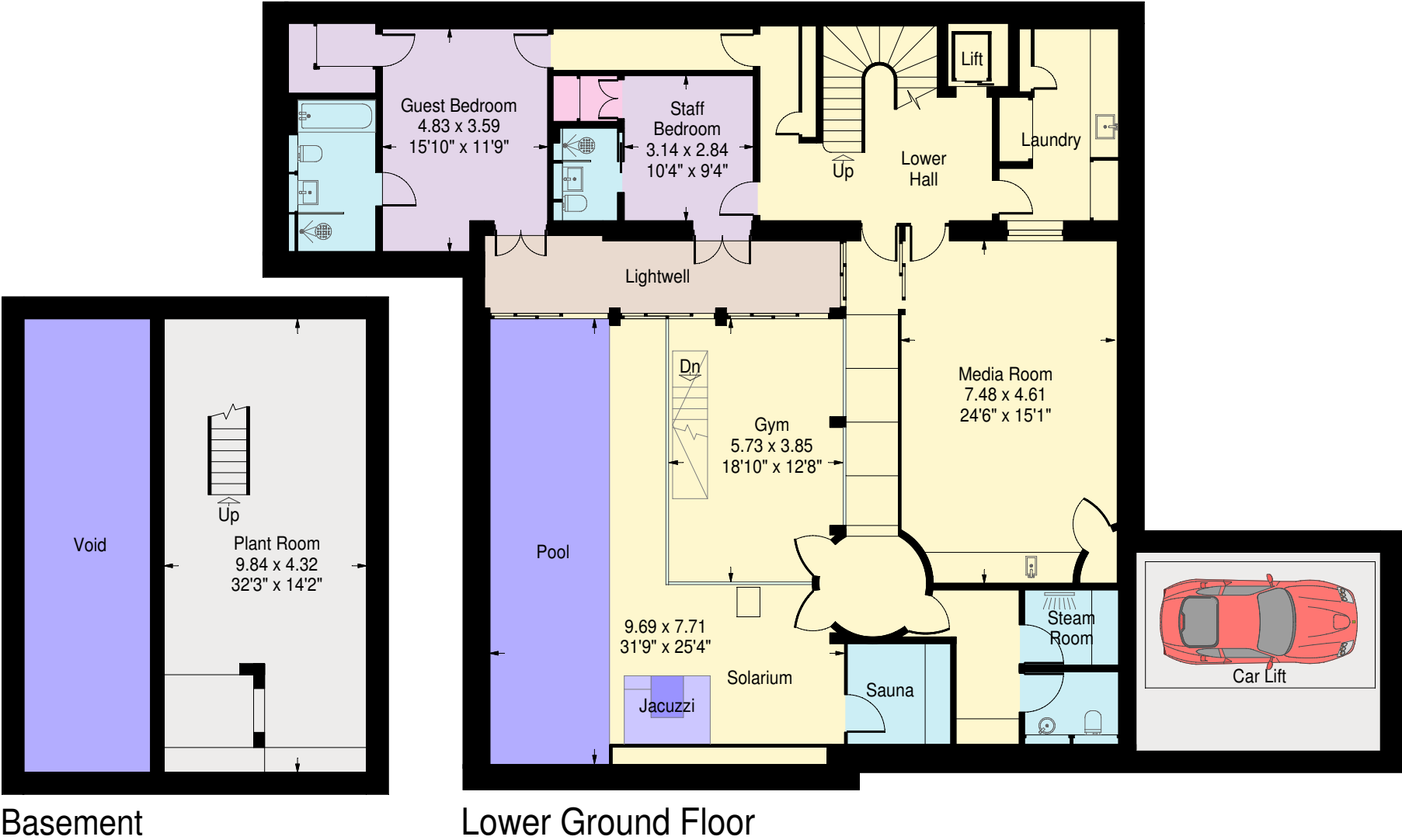


Ground Floor

Not to scale

This plan has been produced utilising existing drawings and is for guidance only, it must not be relied upon as a statement of fact.

Melina Place, London NW8



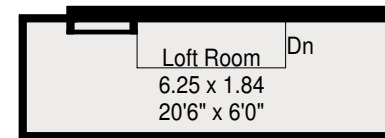
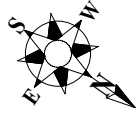
Basement

Lower Ground Floor

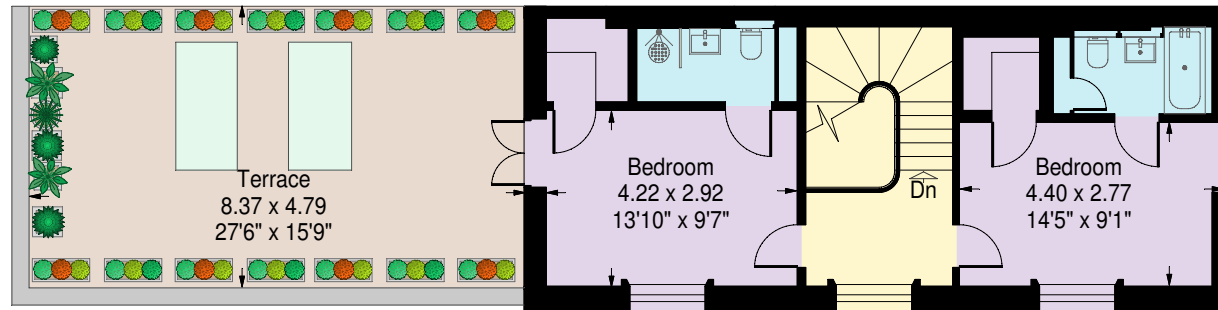
Not to scale

This plan has been produced utilising existing drawings and is for guidance only, it must not be relied upon as a statement of fact.

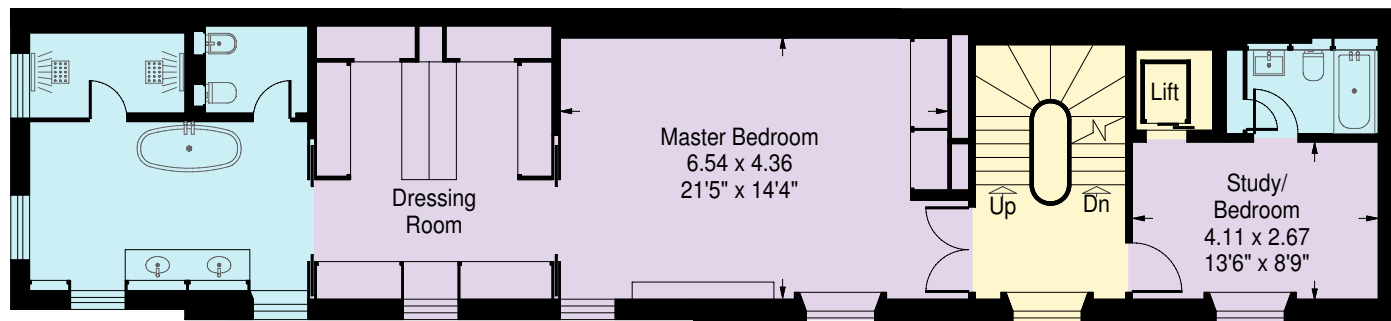
# Melina Place, London NW8



Third Floor



Second Floor



First Floor

This plan has been produced utilising existing drawings and is for guidance only, it must not be relied upon as a statement of fact.

Not to scale